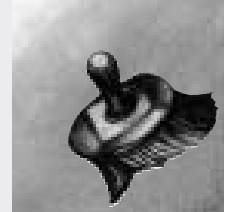


AGLAIA BEESWAX GLAZE BINDER

Transparent, water thinnable glaze binder for colored AGLAIA wall glazing technique. Thinnable with 3 to 5 parts water, washable when dry. For pigmentation, use AGLAIA PIGMENTS. Exclusively made from natural raw materials.



Ranges of Application:

For indoor use, on walls and ceilings in private homes as well as commercial, industrial and public buildings, such as schools, kindergartens and therapeutic institutions. Basis for a colored wall glaze technique is the use of a covering white glaze primer, i.e. either AGLAIA CASEIN BINDER PAINT, AGLAIA STRUCTURAL CASEIN PAINT or AGLAIA RENOVATION PLASTER. AGLAIA BEESWAX GLAZE BINDER acts in terms of a glaze binder for color-glazed interior design. The transparent, satin-matt glaze coat wraps in the color pigments and provides an illusion of depth and light scattering.

Suitable surfaces are: pre-coated lime and gypsum plasters, fabric wall papers, light-weight building elements and recoatable old coatings.

Processing:

Thoroughly stir up AGLAIA BEESWAX GLAZE BINDER. As a thumb rule, add one part glaze binder to four parts clear water and stir well (observe sequence !). In case of extremely hard tap water and pigments with a high tendency to flocculation (plant colors !), the use of de-ionized water is recommended. This preparation is color pigmented with AGLAIA PIGMENTS, see Color Chart, previously wetted in as little alcohol as possible.

For reference: 1 l AGLAIA BEESWAX GLAZE BINDER, thinned with 3-5 parts water, requires approx. 20 to 50 cm³ AGLAIA PIGMENTS and is sufficient for one coat with a wall surface of approx. 50 m². Glazing at a brisk pace, lap-free with a soft oval brush will provide a water color-like, cloudy look. Single-color or multi-color glazes are possible, the latter by mixing pigments or, even better, by glazing several colors, one on top of the other. For more detailed information about the processing, refer to our Information Leaflet „AGLAIA Wall Glazing Technique“. If the glaze dries too quickly, add some water. If the glaze flows off, add some glaze binder.

Drying time between the glazing procedures: at least 2 hours. The white base coat must dry for at least 2 days before glazing. Make samples to match working procedure, pigmentation and glazing sequence.

For more information about **Surface and Pretreatment**, see backside of this information sheet.

Technical Features:

AGLAIA BEESWAX GLAZE BINDER is an easy-to-use, economical glaze binder. After drying absolutely tack-free and abrasion-resistant. Impurities and dirt may be dabbed off with a moist sponge. Thanks to the use of pure beeswax, water-resistant, without static build-up and of natural look. Non-yellowing and compatible with a great number of pigments; pretest when using earth and plant pigments because of natural variations. In combination with AGLAIA CASEIN BINDER PAINT and AGLAIA STRUCTURAL CASEIN PAINT, proven successful on millions of square meters in commercial, industrial and public buildings. Maintains the diffusion and absorption capacities of the coating and the surface, therefore, ideal for an agreeable room climate.

Water absorption and water-vapor diffusion characteristics:

W₂₄-value: 0.2 kg/(m²h^{1/2})

s_d-value (H₂O): 0.05 m

Physical/Technical Characteristics:

Density: 1.02 g/cm³

pH Value: 8

Dynam. viscosity: 7,000 mPas

Color tones:

Clear-transparent. Pigments for color glazing: see AGLAIA PIGMENTS (Color Chart). As an alternative, tone with AGLAIA FULL COLOR WALL PAINTS.

Drying:

Under normal conditions, safe to glaze after 2 to 3 hours, safe for regular use after 10 days. Ensure proper ventilation while drying.

Yield:

Approx. 0.02 l AGLAIA BEESWAX GLAZE BINDER per m² per glaze coat.

Available Sizes:

0.25 l, 1 l, 3 l and 10 l.

Cleaning:

Clean appliances, tools and clothes with water immediately after use.

AGLAIA BEESWAX GLAZE BINDER

Storage:

Lasts at least 12 months when stored cool and frost free in the airtight sealed original container. Once opened, cover with very little alcohol, re-seal container airtight and use up as soon as possible. When mixed with water, use up in a few days.

Composition:

Full declaration according to the quality standards of the Association for Natural Colors (AGN):

[1]: Tap water; [2] Yellow beeswax, Refined linseed oil, Milk casein, Borax, Shellac; [3] Potash, Lavender oil, Turkey red oil, Clove oil, Olein, Dammar resin.

Explanation of Symbols:

- [1] ... Raw material rate in product > 10%
 [2] ... Raw material rate in product 1-10%
 [3] ... Raw material rate in product < 1%

Surface and Pretreatment:

General Requirements:

The surface must be clean, dry, solid and coatable. Surface pretreatment and painting system depend on the white base coat, refer to the corresponding Technical Information Sheet.

Dry-brush water marks and seal spots with AGLAIA SHELLAC INSULATING PRIMER or larger areas with AGLAIA INSULATING WHITE. Touch up open spaces and flaws to match style and structure. Reinforce cross joints of light-weight building boards with fabric, level out with filler and sand. Observe the board manufacturer's instructions. Prime absorbent surfaces (gypsum !) with AGLAIA PRIMER.

As a covering white matching glaze primer may be used:

► AGLAIA CASEIN BINDER PAINT:

Breathing' casein dispersion paint without structural grain, therefore, especially indicated for already textured surfaces such as grained plasters, coarse grained wall papers or wall fabrics. Apply twice with roller or brush.

► AGLAIA STRUCTURAL CASEIN PAINT:

Casein dispersion enriched with fine quartz grains (0.4 mm), best for smooth plasters and light-weight building elements. Providing an attractive light scattering. Apply twice by roller or brush. Ensure uniform grain distribution since nonuniformities will be enhanced through colored glazing.

► AGLAIA RENOVATION PLASTER:

0.4 mm fine grain natural fiber plaster. Apply layers of a thickness of about 1mm, once or twice, by trowel or plaster spray gun. Perfect for leveling structural flaws on walls of old buildings or light-weight building elements.

► BEECKOTEX:

Very absorbent fiber plaster offering all kinds of possibilities for an individual design. For subsequent glazing with AGLAIA BEESWAX GLAZE BINDER, mix 1 kg BEECKOTEX with 30 g AGLAIA NATURAL RESIN BINDER. Apply two to three times by brush, trowel or funnel-type spray gun.

Coats not especially matched with AGLAIA BEESWAX GLAZE BINDER will not produce a satisfying glaze. Completely inappropriate are strongly bound artificial and yellowing natural resin dispersion paints.

Suitable surfaces:

- Lime, lime cement and gypsum plasters;
- Gypsum plaster boards and fibrous plaster boards;
- Lime sandstone, brick, concrete;
- Coarse grained wall papers, wall fabrics;
- Dull, old, but recoatable coatings.

Safety Instructions and Disposal:

► Hazard Class: not subject to identification requirements under Toxic Chemicals Ordinance/ EU Directive.

Chemically sensitive and environmentally ill persons, please pay attention to the full declaration. Keep out of reach of children. Do not dispose of organic coatings into the sewage system. Disposal of product remainders according to legal regulations. Disposal of empty containers through resource collection points.

► Waste Code: Product and Product Remainders (European Waste Code): 080199 (Coatings).

It is our objective to provide, through this technical information, advice based on our skills and practical experience. Any instructions given are non-binding and do not release the user from his or her liability to check for product suitability and application methods him/herself with regard to the surface used. Technical modifications may result from product development. Upon publication of a revised or new version, these instructions will automatically lose their validity. The details contained in the EU Safety Data Sheets in their current form dictate liability for classification in terms of the Hazardous Substances Regulation, disposal etc.